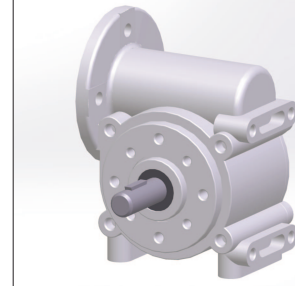


Worm gear

Properties:	General:	Single-stage worm gear For use in combination with our motors. Lifetime grease lubrication
	Housing:	Zinc diecast
	Output:	Power deviation 90°, second shaft end possible Self locking on higher gear reduction ($\eta < 50\%$)
	Options:	Slide bearing, optional ball bearing Second shaft end



Loading capacity	Max. radial force	N	60
	Max. axial force	N	40
	Max. input speed	rpm	4500
	Temperature range	°C	-20° – +40°
Mounting	Shaft diameter	mm	10
	Weight	kg	0.87
	Mounting type (standard)		Drive side

Gear ratios	i	M (Nm)	η
	2.5	4.4	0.82
	5	9.5	0.78
	7	9.7	0.75
	10	9.5	0.68
	15	10.7	0.64
	20	10.3	0.57
	30	10.3	0.47
	50	9	0.35
	70	9	0.34
	100	7.4	0.28

